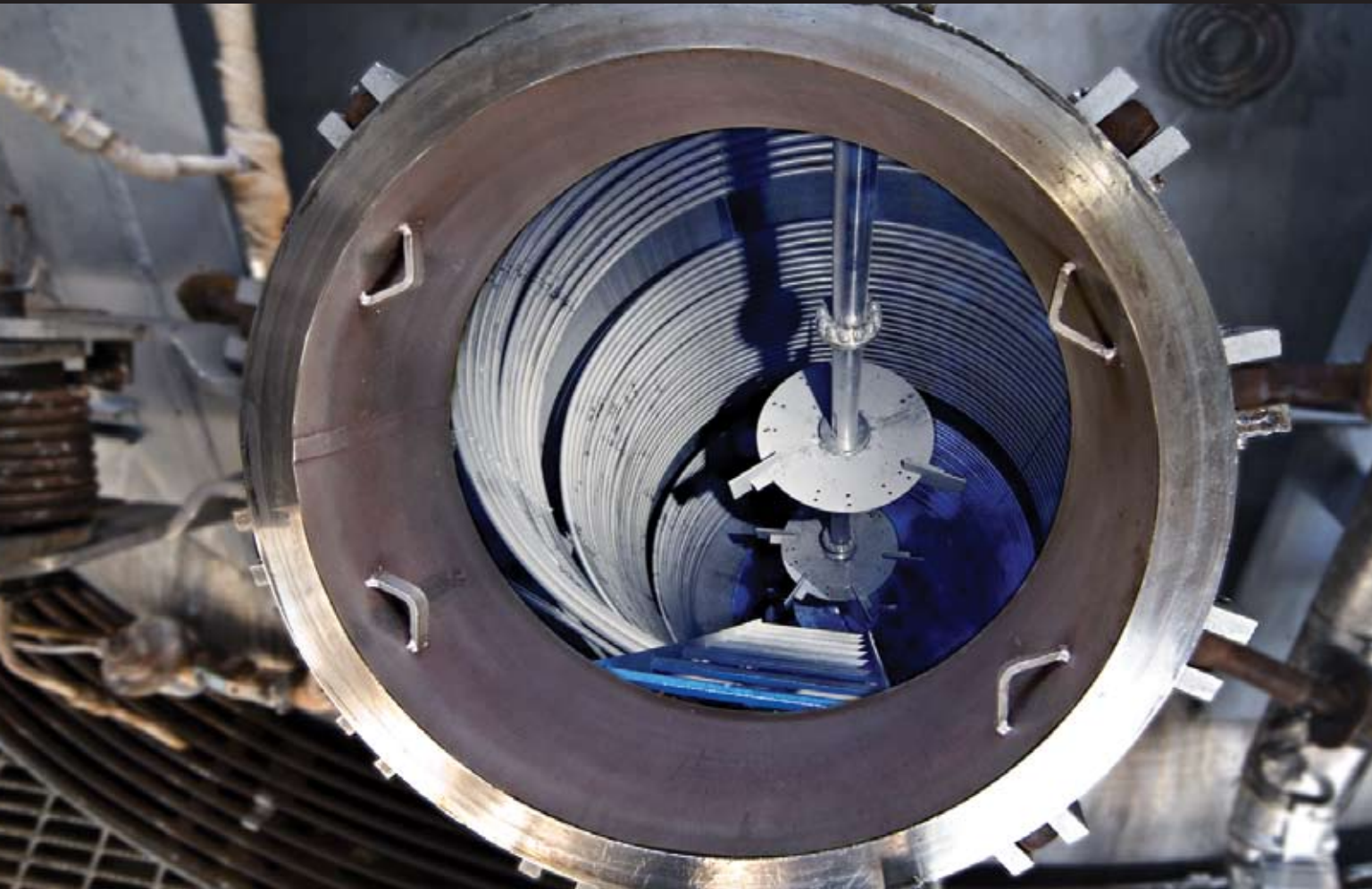


# GMP Fermentation on a Massive Scale?



## PFIZER'S GOT IT.

Large-scale GMP fermentation requires more than just a commitment by a contract manufacturer, it requires a commitment to excellence. The investment in expertise, equipment, process, and quality control can be daunting. But not if you're Pfizer — and not if one of the world's largest pharmaceutical plants is your Center of Excellence in Fermentation. Pfizer CentreSource can deliver:

- World-class resources for analytical, regulatory, and technical support
- Diverse product types: steroids, secondary metabolites, antibiotics, organic acids, food ingredients, feed ingredients, and enzymes
- GLSP and BL 1-LS containment levels
- Process development expertise in: culture improvement, fermentation process optimization, and recovery improvement

When you're looking for custom fermentation expertise, you're looking for Pfizer CentreSource. Call today to find out more.



**Pfizer CentreSource**

*Working together for a healthier world™*

US Headquarters: +1.269.833.5844 | Europe - Brussels: +32.2.749.5502 | Asia Pacific - Singapore: +65.6419.0248  
centresource.info@pfizer.com | www.pfizercentresource.com